

B.A. COPPER MINES LTD.

COORDINATES

ELEVATION

DIP - 50°

AZIMUTH 335°

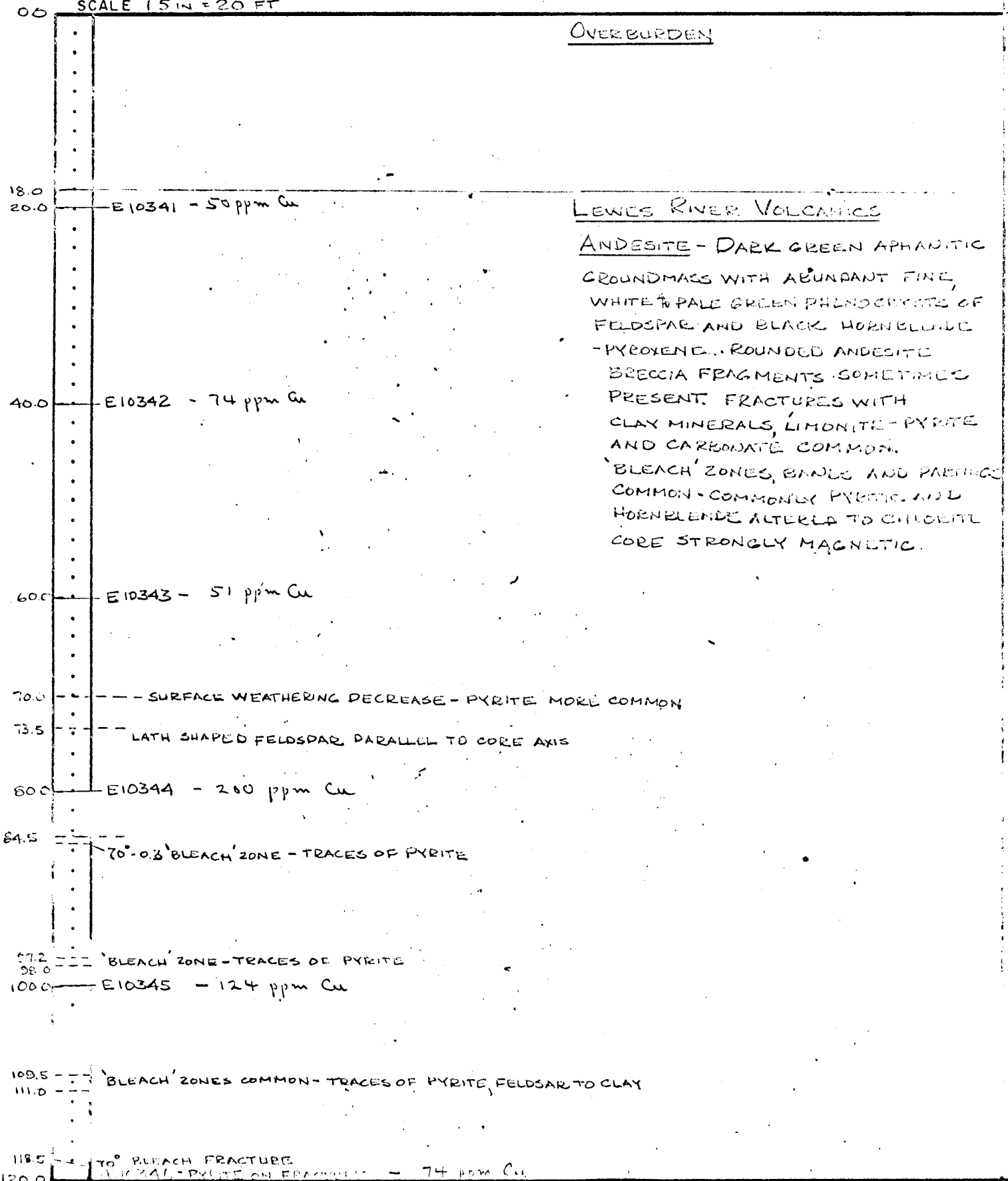
SCALE 1.5 IN = 20 FT

CORE SIZE BQ

HOLE STARTED AUG 31, 1973

HOLE COMPLETED SEPT. 24, 1973

LOGGED BY M.P. PHILLIPS



# DRILL HOLE LOG

HOLE No. 1  
PAGE 2 OF 2

COORDINATES  
ELEVATION  
DIP  
AZIMUTH  
SCALE

CORE SIZE  
HOLE STARTED  
HOLE COMPLETED  
LOGGED BY

120.6

0.2 FT 'BLEACH' ZONE - 75°

LEWIS RIVER VOLCANICS

ANDESITE

136.0

BASE OF SURFACE WEATHERING

136.0

136.5

138.5

35° BLEACH ZONE - MASSIVE PYRITE IN CLAY MATRIX

60° BLEACH ZONE - 0.1 FT PYRITE

E10347 - 180 ppm Cu

BLEACH ZONES, LENSES AND FRACTURES  
CONTAINING PYRITE, WEAK CLAY &  
CARBONATE ALTERATION. OCCASIONAL  
PYRITE ON HAIRLIKE FRACTURES

140.0

160.0

E10348 - 128 ppm Cu

171.0

172.3

'BLEACH' ZONE - PYRITE LENSES & FRACTURE FILLING

180.0

E10349 - TRACE OF PYRITE - 154 ppm Cu

187.0

191.0

'BLEACH' ZONES COMMON - PYRITE PARTING & LENSES COMMON

200.0

E10350 - 220 ppm Cu

220.0

E10351 - BLEACH PARTING WITH PYRITE - 260 ppm Cu

240.0

E10352 - PYRITIC - 945 ppm Cu

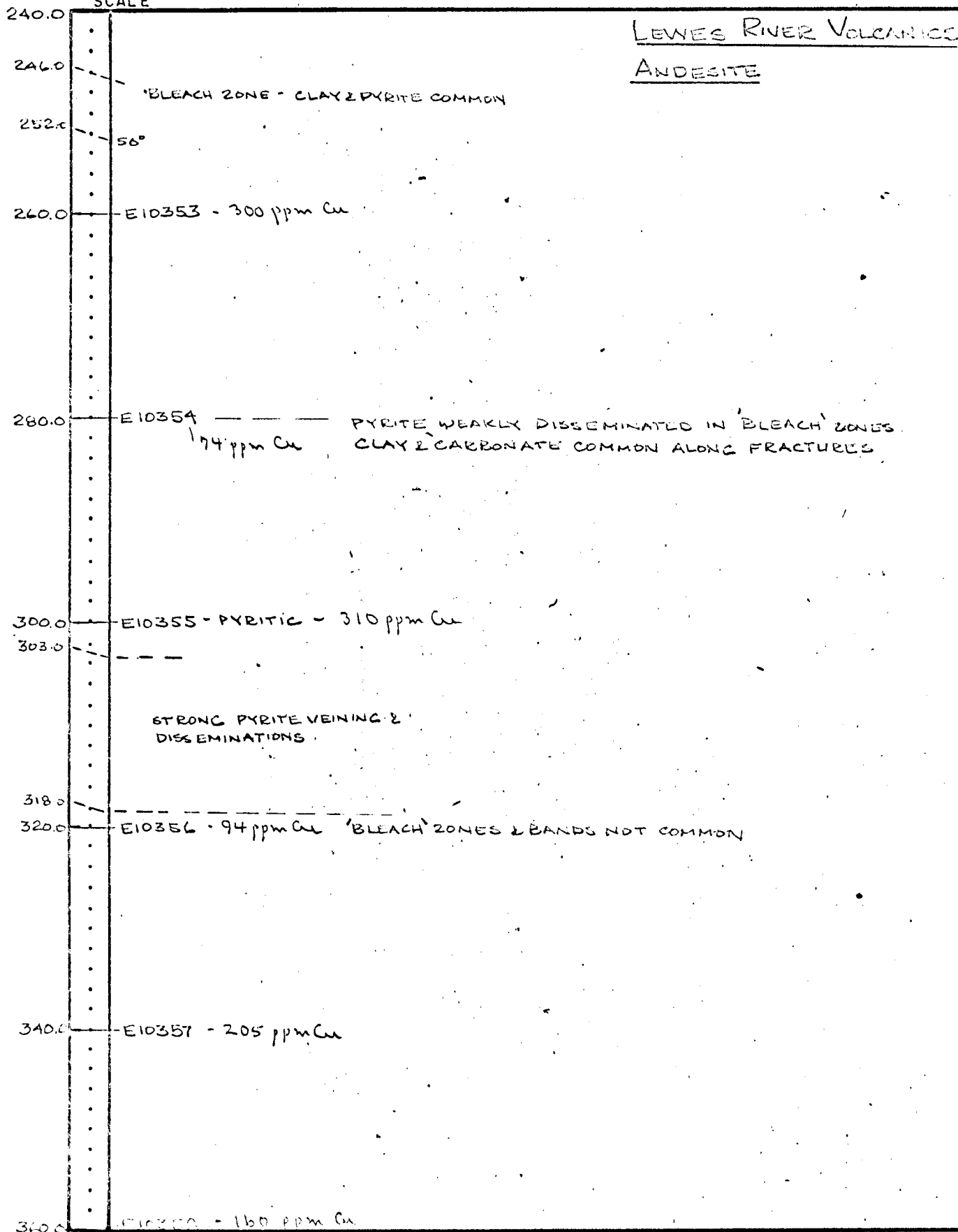
# DRILL HOLE LOG

HOLE NO.  
PAGE 3 OF 3

COORDINATES  
ELEVATION  
DIP  
AZIMUTH  
SCALE

CORE SIZE  
HOLE STARTED  
HOLE COMPLETED  
LOGGED BY

DIP



# DRILL HOLE LOG

HOLE No. \_\_\_\_\_  
PAGE 4 OF 4

COORDINATES  
ELEVATION  
DIP  
AZIMUTH  
SCALE

CORE SIZE  
HOLE STARTED  
HOLE COMPLETED  
LOGGED BY

512

360.0

LEWIS RIVER VOLCANICS

ANDESITE

370.7  
371.7

50' BLEACH ZONE

380.0 E10359 - 34 ppm Cu

385

OCCASIONAL NARROW  
'BLEACH' ZONE

395.0

400.0 E10360 - 200 ppm Cu

416.0

-- FRACTURING BECOMES COMMON

420.0 E10361 - 1320 ppm Cu

FELDSPAR PHENOCRYSTS NOT COMMON -  
DARK GREEN APHANITIC GROUNDMASS  
WITH HORNBLende - HYPOCITIC  
PHENOCRYSTS

433.0

440.0 E10362 - 14 ppm Cu

NUMEROUS 'BLEACH' ZONES. HIGHLY BROKEN  
AND FRACTURED, IN PLACES ALTERED TO CLAY  
- FAULT ZONE?

460.0 E10363 - 92 ppm Cu

471.0

'BLEACH' ZONES, NOT COMMON

480.0

E10364 - 144 ppm Cu

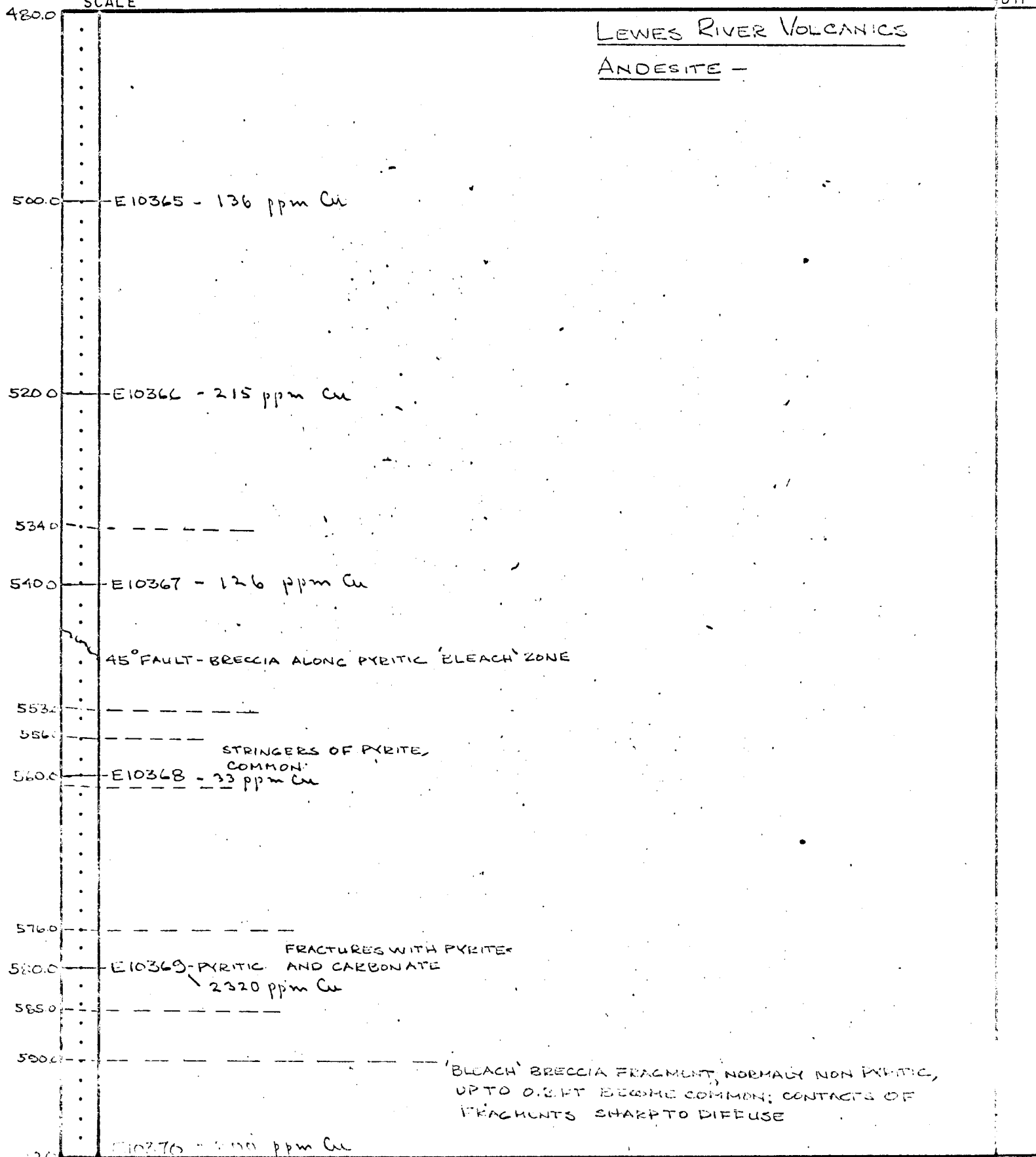
# DRILL HOLE LOG

HOLE No.  
PAGE 5 OF 2

COORDINATES  
ELEVATION  
DIP  
AZIMUTH  
SCALE

CORE SIZE  
HOLE STARTED  
HOLE COMPLETED  
LOGGED BY

DIP



# DRILL HOLE LOG

HOLE  
PAGE 6

COORDINATES  
ELEVATION  
DIP  
AZIMUTH  
SCALE

CORE SIZE  
HOLE STARTED  
HOLE COMPLETED  
LOGGED BY

600.0  
603.3  
604.0  
STRONG CARBONATE VEINING

LEWES RIVER VOLCANICS

ANDESITE

620.0 — E10371 - 124 ppm Cu

640.0 — E10372 - 200 ppm Cu

656.0  
657.5  
'BLEACH' ZONE - ABUNDANT CARBONATE, GOUGY - FAULT ZONE?

660.0 — E10373 - 100 ppm Cu

680.0 — E10374 - 144 ppm Cu

BRECCIA FRAGMENTS TO 0.1 FT.

700.0 — E10375 - 66 ppm Cu

720.0 — E10376 - 310 ppm Cu

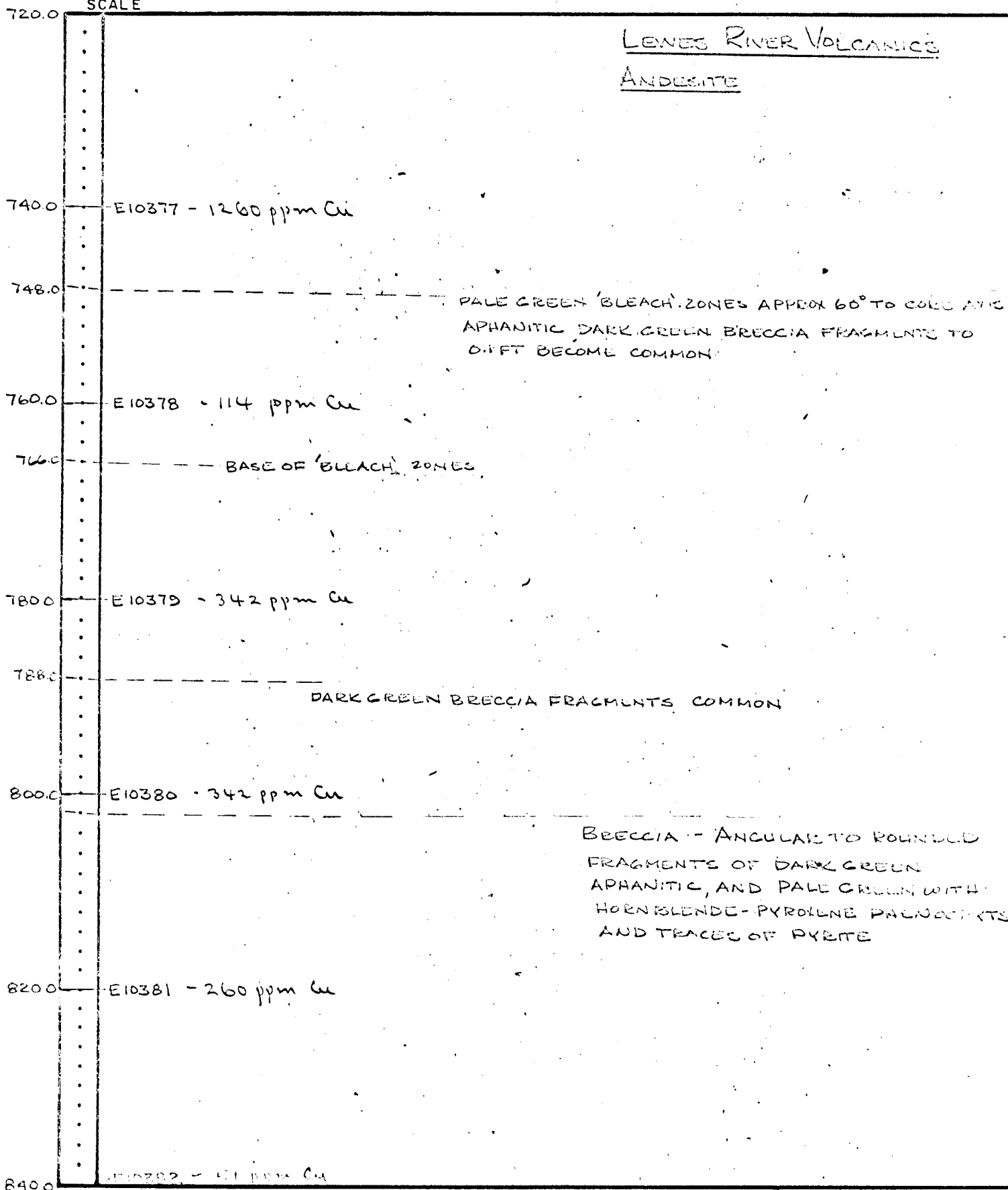
# DRILL HOLE LOG

HOLE NO. 1  
PAGE 7 OF 7

COORDINATES  
ELEVATION  
DIP  
AZIMUTH  
SCALE

CORE SIZE  
HOLE STARTED  
HOLE COMPLETED  
LOGGED BY

DIP



# DRILL HOLE LOG

HOLE NO.  
PAGE 8 OF 1

COORDINATES  
ELEVATION  
DIP  
AZIMUTH  
SCALE

CORE SIZE  
HOLE STARTED  
HOLE COMPLETED  
LOGGED BY

D.P.

LEWES RIVER VOLCANICS  
ANDESITE.

840.0  
E10383 - 146 ppm Cu

860.0  
E10384 - 141 ppm Cu

900.0  
E10385 - 164 ppm Cu

920.0  
E10386 - 74 ppm Cu

940.0  
E10387 - 86 ppm Cu

960.0  
E10388 - 78 ppm Cu



# DRILL HOLE LOG

HOLE No.  
PAGE 9 OF 9

COORDINATES  
ELEVATION  
DIP  
AZIMUTH  
SCALE

CORE SIZE  
HOLE STARTED  
HOLE COMPLETED  
LOGGED BY

960.0

LEWES RIVER VOLCANICS  
ANDESITE -

980.0 - E10389 - 180 ppm Cu

1000.0 - E10390 - 68 ppm Cu  
1001.0 - END OF HOLE

Excellent recovery throughout  
→